

Framed Mirror TV

Build It Yourself With Our Step-By-Step Guide

DIFFICULTY : Essential Woodworking Skills

ESTIMATED TIME: 3-4 Hours

MIRROR SIZE: Exterior TV size (excluding stand)

The frame serves several purposes in a mirrored television. Naturally, there is the decorative aspect to a frame, complementing your décor, with a simple frame, or creating a focal point in a room with a more audacious style. In addition to the decorative aspect, a frame holds the glass in front of the television and hides the unsightly bezel and sides of the television. With the addition of an infrared repeater, the signal from your remote is still able to control the television through the frame.



HIDDEN TELEVISION TIP:

Have the right tools before beginning.

Measure twice, even thrice, but cut only once.



Tools



DIELECTRIC MIRROR



FRAME STICKS



ROUTER TABLE



WOOD GLUE



#6 1/2" SCREWS



TAPE MEASURE



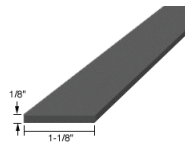
RUBBERIZED CLAMP



LONG CLAMPS



ISOPROPYL LENS CLEANER



RUBBER SHIMS



Z-BAR HANGER



TABLE SAW



CHOP SAW



IR REPEATER





1 Measure Television:

❑ Measure viewable area of the television. You want to measure the size of the top, bottom and sides of the bezel. Pay attention to any irregularities, such as the infrared sensor (see #1). This will be the rabbet you cut into your frame to fit the glass and TV.

2 Cut Frame Sticks Using Chop Saw:

❑ The overall dimensions of your frame will equal the viewable area of the television plus the frame width. Use a fine toothed blade to make sure your frame doesn't chip.

3 Use Router Table To Increase Rabbet:

❑ Check your results against the face of the TV as you go.

4 Join Frame Corners:

❑ Use Cornerweld wood glue to join opposing corners. Place 1/8" wedge under each end if necessary to ensure corners are flawless.

5 Use Long Clamps to Join Frame:

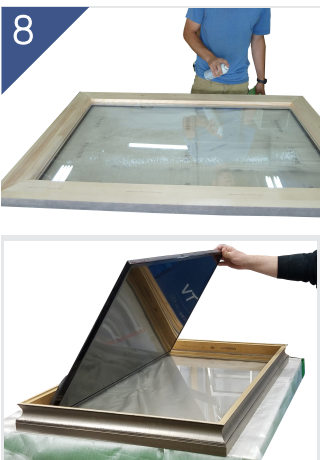
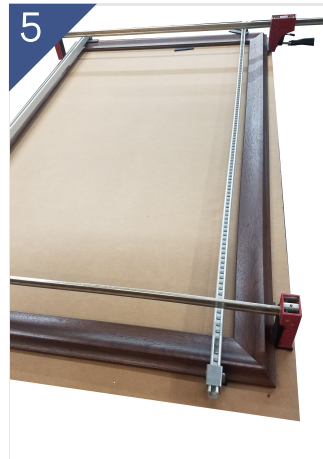
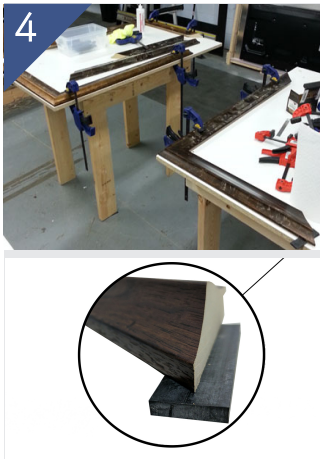
❑ Once clamps are joined let sit for at least one hour. Careful not to over-tighten them on soft or premium frames.

6 Measure Back Build Frame:

❑ Measure the remaining distance to the back of your television. Your back build will need to be flush with the back of the TV.

7 Cut & Glue Back Build Frame:

❑ Cut the back build sticks 1/16" shorter than the front frame. Turn the front of the frame upside down and glue on your back build.



8 Place Glass & TV Into Frame:

❑ Lay glass gently into rabbet of frame and clean thoroughly. Place TV gently on top of glass. If you have a large TV, it may help to have a 2nd person helping slowly lower the glass and television.

9 Attach Z Bar & Fine Tune TV Position:

❑ Cut Z-bar hangers to fit over television. Be sure to find where the IR sensor is located. Do not cover the sensor with the Z bar.

10 Add Infrared Repeater:

❑ Attach the IR to the television. Plug in your 12 volt adapter and connect the emitter to the television sensor. Be sure the IR eye is in line of sight with the remote.