

Mirror Handling & Care

Protective Lamination

Both sides of the mirror are covered with protective lamination, which needs to be removed before using the mirror (our framed mirrors sizes 24"x36" and under come with the lamination already removed).

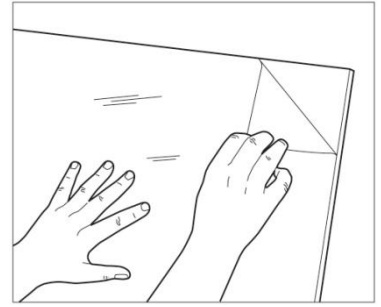
Please note that it is completely normal for there to be scratches and scuffs on the protective lamination—this does not mean your mirror is scratched. If you are planning to cut the mirror, do so before removing the protection to ensure that your mirror doesn't get scratched. After you remove the lamination, be careful not to get any fingerprints on the mirror.

Cleaning

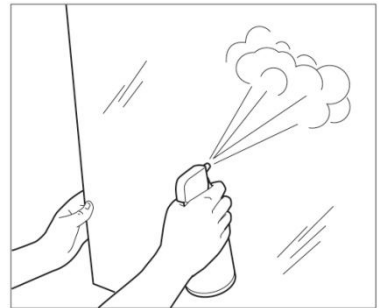
Be careful with your new mirror—acrylic scratches fairly easily! Cleaning of dust should be done with compressed air (computer duster) to avoid leaving streaks. To clean oil or fingerprints, use Novus 1 cleaner and Novus Polish Mates. Novus 1 can heal light scuffs and scratches, and adds a protective coating to prevent future damage. Please see our website if you are interested in ordering Novus products. Do not use Windex or other corrosive agents on your mirror. Do not soak in water. Do not use Novus on the coated side unless it is necessary to clean oily residue.

Caring For Your Mirror

Do not store mirrors at an angle, or they will bend over time. The coated side is sensitive to water, but the uncoated side isn't. Avoid leaving the coated side exposed to high humidity or outdoor conditions. The coated side has a protective transparent coating on it which protects it from scratching. Try to avoid having to clean the coated side, because it's possible the cleaning solution will leave residue and the wipes will leave scuff marks. The uncoated side is fine to clean repeatedly, as long as you are using special plastic cleaner such as Novus 1 and Polish Mates.



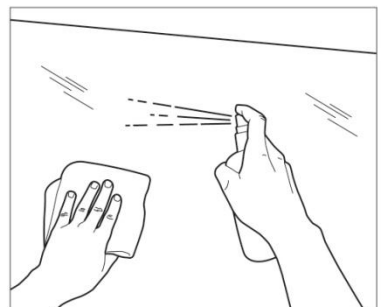
Peel lamination before using



Clean dust with canned air



Do not use glass cleaner



Clean using Novus 1 & Polish Mates

Finding The Coated Side

Hold an object such as your fingernail against the mirror. If there is a gap between the object and its reflection, it is the uncoated side. If there is no gap between the object and its reflection, it is the coated side. For most applications, the uncoated side is closer to the viewer, to allow that side to be easily cleaned. The exception to this rule is when a beam-splitter is used in teleprompters, which often have the coated side closer to the viewer to prevent a double image.

Framing Tips

Framing can be done at a local picture frame shop, or by a cabinetmaker or carpenter, depending on the requirements of your project. We recommend that you buy the mirror before having the frame made, so that it will fit without further cutting. To prevent accidental scratching, the plastic lamination should be left on the mirror until the frame is ready to be mounted on your wall. The frame should be snug, but not overly tight. If too much pressure is put on the edges, the reflection will appear distorted. Glue is fine to use around the edges, but it's generally not a good idea to use it on the mirror coating, because many glues contain corrosive chemicals which can make it peel off.

More Information

TwoWayMirrors.com – Two way mirrors for security and observation
HiddenTelevision.com – Mirrors for creating a hidden TV effect
TeleprompterMirrors.com – Beam splitters for teleprompter projects
FirstSurfaceMirrors.com – 94% reflective, opaque, front surface mirrors
HiddenCamStore.com – Surveillance cameras, DVR's, & spy gadgets

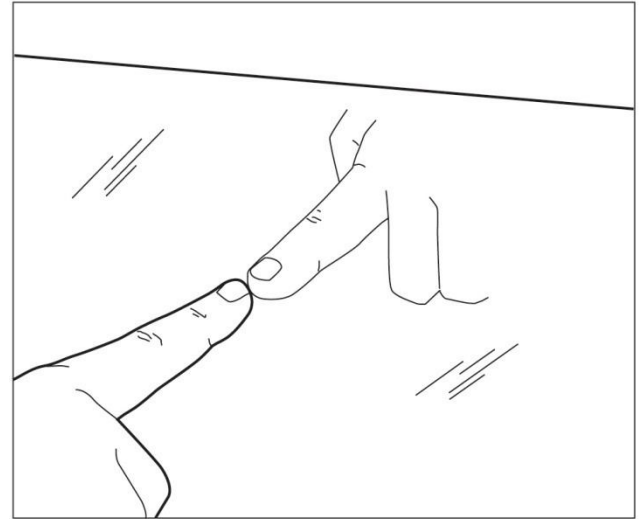
Contact Us

sales@seethroughmirrors.com

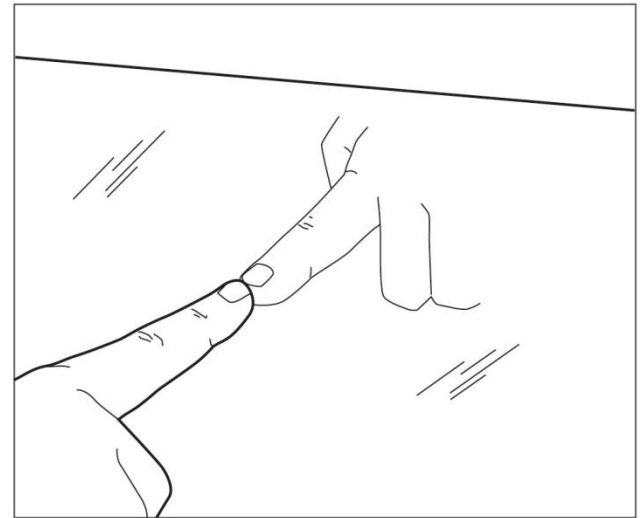
Phone: 419-787-4526

Fax: 419-754-2327

Return Policy: If you are unsure if the mirror will work for your project, please order a product sample from our website first to test it out. Please contact us before shipping products back. All of our products are custom cut from larger pieces, so we must charge a restocking fee to partly recover the cost of the material destroyed in the process. If the lamination has not been removed, we will usually allow returns with a 15% restocking fee. You may partly remove the lamination if necessary to evaluate, but do not pull it entirely off—it must be shipped back protected by the lamination so that it's not scratched. We do not allow returns once the lamination has been completely removed, because we can't resell the mirror. Please contact us immediately if you are concerned about the condition your mirror arrives in.



UNCOATED side - gap between finger and reflection



COATED side - no gap between finger and reflection